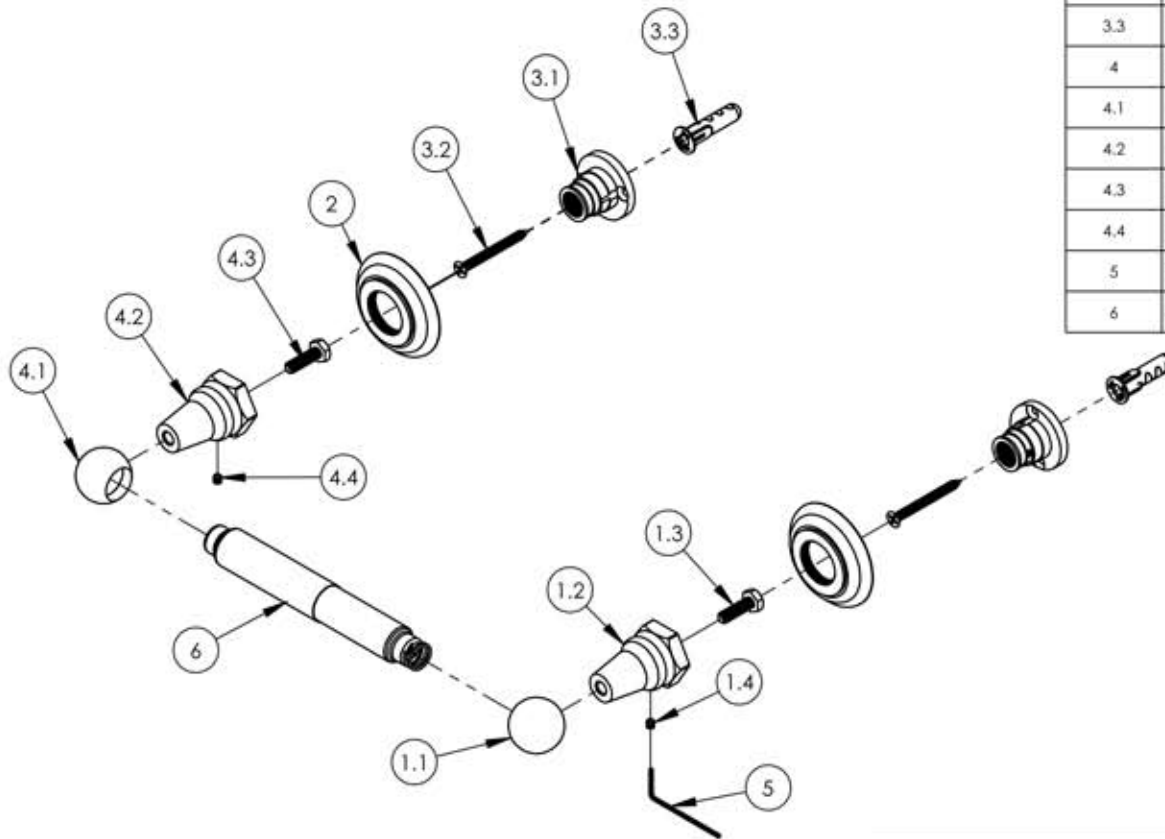


| ITEM NO. | PART NUMBER | DESCRIPTION                                   | QTY. |
|----------|-------------|---|------|
| 1        | 3-563/00    | ASSY, BALL END W/ POST BASE, RIGHT            | 1    |
| 1.1      | 11081/00    | END BALL, TOWEL BAR, 500 SERIES               | 1    |
| 1.2      | 11076/00    | POST, 500 SERIES                              | 1    |
| 1.3      | 92232       | HEX HEAD CAP SCREW, 1/4-20, 7/8" L            | 1    |
| 1.4      | 92008       | SET SCREW, CUP POINT 8-32, 3/16" L.           | 1    |
| 2        | 10619/00    | ESCUTCHEON, TRADITIONAL LAV 1"-20             | 2    |
| 3        | 3-568       | ASSY, WALL MOUNT HARDWARE KIT                 | 2    |
| 3.1      | 11050       | MOUNTING KIT, WALL FLANGE                     | 1    |
| 3.2      | 92043       | SCREW, FLAT HD #10 SIZE W/ #2 PHIL DRIVE, 2"L | 1    |
| 3.3      | 92046       | ANCHOR SCREW 3/8" HOLE, TOGGLER AF10          | 1    |
| 4        | 3-569/00    | ASSY, BALL END W/ POST BASE, LEFT             | 1    |
| 4.1      | 11081/00    | END BALL, TOWEL BAR, 500 SERIES               | 1    |
| 4.2      | 11076/00    | POST, 500 SERIES                              | 1    |
| 4.3      | 92232       | HEX HEAD CAP SCREW, 1/4-20, 7/8" L            | 1    |
| 4.4      | 92008       | SET SCREW, CUP POINT 8-32, 3/16" L.           | 1    |
| 5        | P39001      | 5/64 HEX KEY                                  | 1    |
| 6        | 3-055/00    | TP ROLL SPRING HOLDER                         | 1    |



|      |      |                                |            |          |
|------|------|--------------------------------|------------|----------|
| ALL  | C    | UPDATED DRAWING AND COMPONENTS | 11/12/2018 | RAH      |
| ZONE | REV. | DESCRIPTION                    | DATE       | APPROVED |

|   |  |   |
|---|--|---|
| REVISIONS   |  | <b>PHYLORICH®</b><br>Defining Luxury Since 1959<br>PROPRIETARY AND CONFIDENTIAL<br>THE INFORMATION CONTAINED IN THIS DRAWING IS THE SOLE PROPERTY OF RKS MANUFACTURING. ANY REPRODUCTION IN PART OR AS A WHOLE WITHOUT THE WRITTEN PERMISSION OF RKS MANUFACTURING IS PROHIBITED. |
| 1261 LOGAN AVENUE<br>COSTA MESA, CALIFORNIA 92626<br>PHONE: 714.361.4800<br>FAX: 714.617.3120 |  |   |

|   |  |                 |           |
|---|--|-----------------|-----------|
| INTERPRET GEOMETRIC DIMENSIONING & TOLERANCING IN ACCORDANCE WITH ASME Y14.5-2009 & ASME Y14.41-2003 STANDARDS, UNLESS OTHERWISE SPECIFIED. DIMENSIONS ARE IN INCHES. TOLERANCES ARE: |  |                 |           |
| FRACTIONS<br>±1/64"   | DECIMALS<br>X.X: ±.1<br>X.XX: ±.01<br>X.XXX: ±.005 | ANGULAR<br>±.5° |           |
| NEXT ASSY   | USED ON  |                 |           |
| APPLICATION   |  |                 |           |
| MATERIAL  |  |                 |           |
| FINISH  |  |                 |           |
| DO NOT SCALE DRAWING  |  |                 |           |
| DRAWN   | RAH  | DATE            | 4/23/2014 |
| CHECKED   | GRE  |                 |           |

|   |              |              |
|---|--------------|--------------|
| TP HOLDER DOUBLE POST, HEX TRADITIONAL SERIES |              |              |
| SIZE  | ASM/PRT NO.  | REV          |
| <b>A</b>                                      | 500-73/00    | C            |
| SCALE: 1:4                                    | WEIGHT: lbs. | SHEET 1 OF 2 |

5

4

3

2

1